



Accessibility Guide

Museum of the Order of St John

museum@sja.org.uk, 020 7324 4005, <http://museumstjohn.org.uk/>

Guided Tour

St John Ambulance: A Victorian Masterpiece

Discover the heroes and innovators who brought first aid to the public and changed the way we think about first response medical care. From world wars to royal jubilees, find out how St John Ambulance became an international movement through the personal stories of its dedicated women and men. The tour will lead you through the galleries and historic rooms of St John's Gate, the unique setting for the administrative heart of St John Ambulance and the place where this fascinating story began.

Tours will last approximately 45 minutes.

Disabled visitors may bring a carer or companion with them on the tour for free.

At a Glance



Level Access

- There is no level access to the upstairs rooms visited on the guided tour.
- These rooms (the Chapter Hall, Old Chancery and Council Chamber) can be explored online via Google Street View at <https://bit.ly/3vGqQ3m>. Please note that some details may have changed since these images were taken.



Access with steps

- There are a total of 40 ascending and 43 descending steps along the tour route. Use of a lift allows this to be reduced to 12 ascending and 12 descending steps for anyone who requires it.



Visual

- Glass doors and full-height windows have contrast markings.
- Some parts of the venue have low lighting.

Seating





- There are seats available in some of the areas that the guided tour visits. None of the seats have arms, but some have backs.



Toilet for disabled visitors

- There is a toilet for disabled visitors which can be used before or after the tour.

Contents

Accessibility Guide	1
Museum of the Order of St John.....	1
Guided Tour	1
St John Ambulance: Saving lives for 150 years.....	1
At a Glance.....	2
Getting here.....	4
 Travel by public transport.....	4
 Parking at St John's Gate	5
Arrival	6
Getting around inside St John's Gate	7
 Reception and shop	7
 Museum public toilets	8
The guided tour route	9
Stop 1: The south side of St John's Gate.....	9
Stop 2: The St John Ambulance Gallery	10
Stop 3: The Link Corridor.....	11
Stop 4: Chapter Hall	12
Stop 5: Old Chancery	13
Stop 6: Council Chamber.....	14
Returning to the Museum reception to finish the tour	15

Getting here



St John's Gate where the Museum is housed. The entrance is under the Gate.

St John's Gate, St John's Lane
Clerkenwell
London
EC1M 4DA



Travel by public transport

- You can get to the Museum of the Order of St John by bus, train and Underground.
- The nearest bus stop is on Clerkenwell Road and is called St John Street (Stop J). It is served by London buses 55 and 243. This bus stop is 132 yards / 121 metres from the Museum.
- There is also a bus stop nearby on St John Street which called St John Street / Goswell Road (Stop M). It is served by London bus 153. This bus stop is 176 yards / 160 metres from the Museum.
- All London bus services are accessible for wheelchair users.
- The nearest train and Underground station is Farringdon. It is 0.2 miles / 0.3 km from the Museum.
- Farringdon Station is served by the Circle, Hammersmith & City, and Metropolitan lines, and by Thameslink services. Accessibility information can be found on the Transport for London [website](#) and on the Thameslink [website](#).
- You can get a taxi with Swift Cars by calling 020 7328 3333. This taxi company does not have wheelchair accessible vehicles.
- You can get a taxi with ComCab by calling 020 7908 0271. This taxi company has wheelchair accessible vehicles.

Parking at St John's Gate



There is a drop-off point at the main entrance, and parking spaces for visitors with access requirements can be pre-booked.

- There is a drop-off point either side of St John's Gate. One is accessed from St John's Lane and the other from St John's Square/ Clerkenwell Road. The roadway is flush with the pavement in both locations.
- Limited vehicle parking is available for visitors with access requirements and spaces can be pre-booked (subject to availability) by contacting the Museum. These parking spaces are located on the south side of St John's Gate and are accessed from St John's Lane.
- Free parking on the south side of St John's Square is also available to Blue Badge holders, and to all on Sundays and Bank holidays. This is on the north side of St John's Gate and is accessed from Clerkenwell Road. For more information about parking, please visit the relevant section of Islington Council's website:
<https://beta.islington.gov.uk/parking/where-to-park/parking-for-disabled-people>

Arrival



The main entrance to the Museum at St John's Gate.

Path to main entrance

- From the street to the main entrance, there is level access.
- The path is 1200mm wide, or more.

Main entrance

- The main entrance has level access.
- The main door is side hung and manual.
- The door is 930mm wide.

Getting around inside St John's Gate

Reception and shop



The Museum reception

- The main door opens directly into the reception and shop area where you will find a member of staff.
- The desk has a low section.
- The route around the reception and shop area is 800mm wide, or more.

Museum public toilets



There is a public toilet for disabled visitors in the Museum.

- There is a public toilet in the Museum for disabled visitors.
- From the Museum galleries to the public toilet, there is level access.
- The toilet door is 900mm wide.
- There is a space of 1160mm in front of the toilet.
- The seat is 480mm high.
- The direction of transfer to the toilet is from the front only.
- There are handrails in the toilet.
- The [nearest Changing Places toilet](#) is located 0.6 miles away in the Barbican Centre.

The guided tour route

Stop 1: The south side of St John's Gate



The south side of St John's Gate

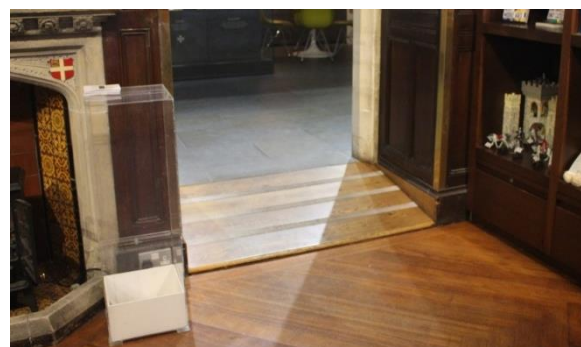
- From the Museum reception to the south side of the Gate, there is level access. The ground is paved in a mixture of flagstones and cobbles.

Stop 2: The St John Ambulance Gallery



The St John Ambulance Gallery

- From the south side of the Gate to the Museum galleries, there is level access. There is a permanent ramp from the reception area to the galleries.
- There are stools available for use in the St John Ambulance Gallery.
- The reception area and Museum galleries can be explored via Google Street View at <https://bit.ly/2QPSfy2>. Please note that some things may have changed since these images were taken for example; there is now a ramp, not a step, between the reception area and galleries.

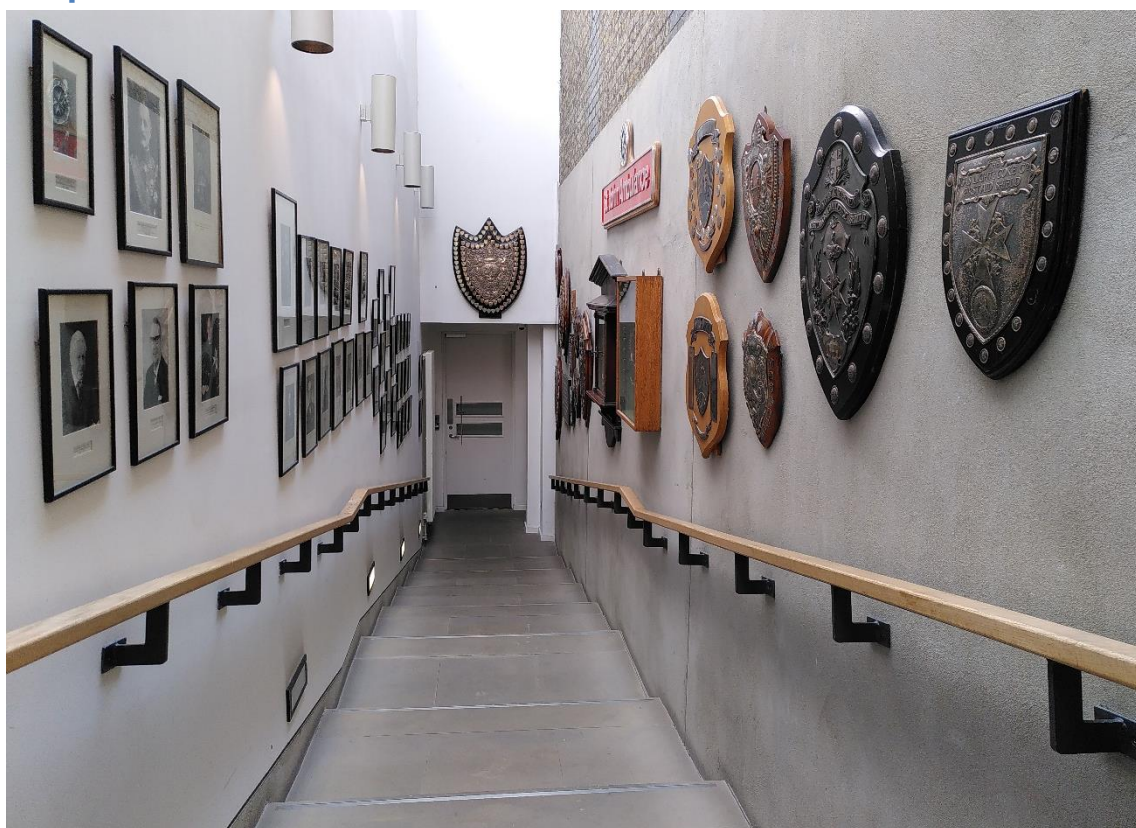


Between the reception area and the museum galleries there is a permanent ramp.



There are stools available for use in the St John Ambulance Gallery.

Stop 3: The Link Corridor



The Link Corridor has eight shallow 'easy going' steps

- From the St John Ambulance Gallery to the Link Corridor, there are 40 carpeted steps. A permanent handrail is available on both sides of the staircase. The steps are split over 4 flights of 11, 10, 12 and 7 steps respectively, with a landing in between each flight.
- An alternative route to the bottom end of the Link Corridor is possible if accompanied by a member of staff. This route goes through the neighbouring St John Ambulance offices, where there are two lifts which allow access to the first floor of that building. There are raised numbers and braille numbers on the buttons in the lifts. The lifts announce the floor number. Please speak to a member of staff before the tour if you require use of a lift.
- The Corridor has a flight of 8 shallow 'easy going' steps, which you will stand on while the guide talks about what is on the walls. There is a permanent handrail on both sides of the corridor.
- There are no seats available in the Link Corridor.



From the St John Ambulance Gallery to the Link Corridor, there are 40 carpeted steps.

Stop 4: Chapter Hall



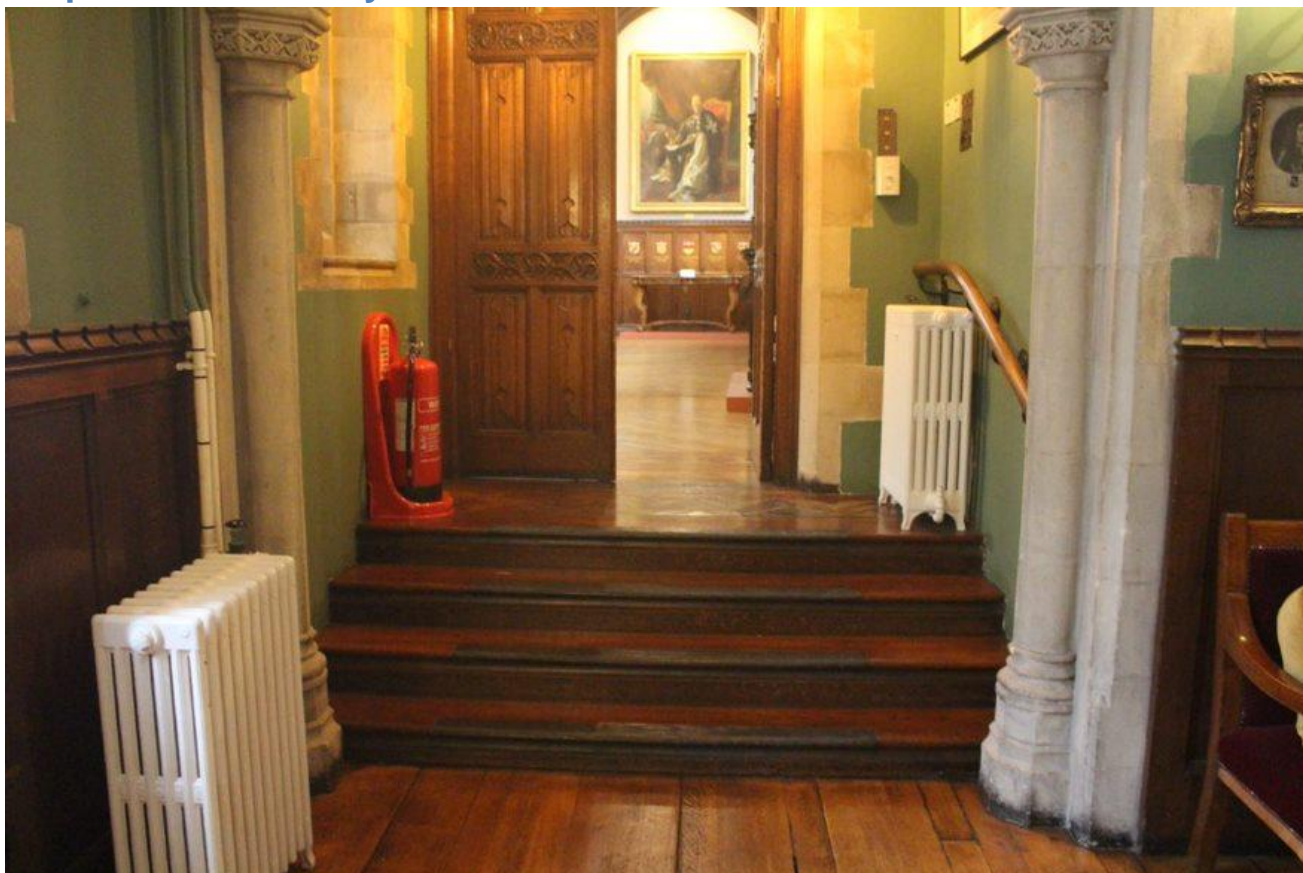
The Chapter Hall

- From the top of the Link Corridor to the Chapter Hall there is level access.
- There are seats in the Chapter Hall.
- The historic rooms upstairs at St John's Gate (the Chapter Hall, Old Chancery and Council Chamber) can also be explored via Google Street View at <https://bit.ly/3vGgQ3m>. Please note that some details may have changed since these images were taken.



There are seats in the Chapter Hall.

Stop 5: Old Chancery



From the Chapter Hall to the Old Chancery and Council Chamber there are four descending steps.

- From the Chapter Hall to the Old Chancery there are 4 steps. A permanent handrail is available on the left as you descend.
- There are seats in the Old Chancery.
- The historic rooms upstairs at St John's Gate (the Chapter Hall, Old Chancery and Council Chamber) can also be explored via Google Street View at <https://bit.ly/3vGgQ3m>. Please note that some details may have changed since these images were taken.



There is some bench seating in the Old Chancery

Stop 6: Council Chamber



From the Old Chancery to the Council Chamber there is level access.

- From the Old Chancery to the Council Chamber there is level access.
- There are seats in the Council Chamber.
- The historic rooms upstairs at St John's Gate (the Chapter Hall, Old Chancery and Council Chamber) can also be explored via Google Street View at <https://bit.ly/3vGqQ3m>. Please note that some details may have changed since these images were taken.



There are seats in the Council Chamber

Returning to the Museum reception to finish the tour



From the Old Chancery back to the Museum reception area there are 41 steps.

- From the Old Chancery back to the Museum reception area, there are 41 steps. A permanent handrail is available on the right in some sections only as you descend.
- The steps are split over 4 flights of 8, 13, 9 and 11 steps respectively, with a landing in between each flight.
- As an alternative, the group can return the way they came up, via the Chapter Hall and carpeted staircase. Please speak to your guide if you would prefer this.
- Those who used the lift to reach the upstairs rooms can return downstairs the same way.



The second flight of stairs curves to the right as you exit the landing area before straightening back up. There is no handrail at this point.