



Accessibility Guide

Museum of the Order of St John

museum@sja.org.uk, 020 7324 4005, <http://museumstjohn.org.uk/>

Guided Tour

Knights, Revellers & Saviours: The Many Lives of St John's Gate

Like many ancient buildings, St John's Gate and the Norman crypt have had a tumultuous past. These extraordinary medieval structures have survived against the odds because of the varied uses they have served over the centuries. Follow in the footsteps of knight-monks, printers, literati, publicans and philanthropists in a whistle-stop tour through 900 years of history. Learn about the characters who lived, worked and entertained here and how they adapted and re-imagined the buildings to meet their needs.

Tours will last 60 minutes. The tour includes the Priory Church, crypt and historic rooms in St John's Gate.

A large part of this tour will take place outside so please dress appropriately for the weather.

Disabled visitors may bring a carer or companion with them on the tour for free.

At a Glance

Level Access

- There are steps along the tour route. Please contact us if steps are not possible for you and we can discuss alternative options for viewing the spaces to which level access is possible.

Access with steps

- There are a total of 40 ascending and 40 descending steps along the tour route.

Visual

- Some parts of the venue have low lighting.





Seating

- There are seats available in some of the areas that the guided tour visits. None of the seats have arms, but all have backs.

Toilet for disabled visitors

- There is a toilet for disabled visitors which can be used before or after the tour.

Contents

Accessibility Guide.....	1
Museum of the Order of St John.....	1
Guided Tour	1
The London Priory of the medieval Order of St John.....	1
At a Glance.....	2
Getting here.....	4
 Travel by public transport.....	4
 Parking at St John's Gate	5
Arrival	6
Getting around inside St John's Gate	7
 Reception and shop	7
 Museum public toilets	8
The guided tour route	9
Stop 1: The south side of St John's Gate.....	9
Stop 2: St John's Square	10
Stop 3: The Priory Gallery.....	11
Stop 4: The Crypt	11
Stop 5: The Priory Church	12
Stop 6: The Cloister Garden.....	13
Stop 7: St John's Square	15

Getting here



St John's Gate where the Museum is housed. The entrance is under the Gate.

St John's Gate, St John's Lane
Clerkenwell
London
EC1M 4DA

Travel by public transport

- You can get to the Museum of the Order of St John by bus, train and Underground.
- The nearest bus stop is on Clerkenwell Road and is called St John Street (Stop J). It is served by London buses 55 and 243. This bus stop is 132 yards / 121 metres from the Museum.
- There is also a bus stop nearby on St John Street which called St John Street / Goswell Road (Stop M). It is served by London bus 153. This bus stop is 176 yards / 160 metres from the Museum.
- All London bus services are accessible for wheelchair users.
- The nearest train and Underground station is Farringdon. It is 0.2 miles / 0.3 km from the Museum.
- Farringdon Station is served by the Circle, Hammersmith & City, Elizabeth and Metropolitan lines, and by Thameslink services. Accessibility information can be found on the Transport for London [website](#) and on the Thameslink [website](#).
- You can get a taxi with Swift Cars by calling 020 7328 3333. This taxi company does not have wheelchair accessible vehicles.
- You can get a taxi with ComCab by calling 020 7908 0271. This taxi company has wheelchair accessible vehicles.

Parking at St John's Gate



There is a drop-off point at the main entrance, and parking spaces for visitors with access requirements can be pre-booked.

- There is a drop-off point either side of St John's Gate. One is accessed from St John's Lane and the other from St John's Square/ Clerkenwell Road. The roadway is flush with the pavement in both locations.
- Limited vehicle parking is available for visitors with access requirements and spaces can be pre-booked (subject to availability) by contacting the Museum. These parking spaces are located on the south side of St John's Gate and are accessed from St John's Lane.
- Free parking on the south side of St John's Square is also available to Blue Badge holders, and to all on Sundays and Bank holidays. This is on the north side of St John's Gate and is accessed from Clerkenwell Road. For more information about parking, please visit the relevant section of Islington Council's website:
<https://beta.islington.gov.uk/parking/where-to-park/parking-for-disabled-people>

Arrival



The main entrance to the Museum at St John's Gate.

Path to main entrance

- From the street to the main entrance, there is level access.
- The path is 1200mm wide, or more.

Main entrance

- The main entrance has level access.
- The main door is side hung and manual.
- The door is 930mm wide.

Getting around inside St John's Gate

Reception and shop



The Museum reception

- The main door opens directly into the reception and shop area where you will find a member of staff.
- The desk has a low section.
- The route around the reception and shop area is 800mm wide, or more.

Museum public toilets



There is a public toilet for disabled visitors in the Museum.

- There is a public toilet in the Museum for disabled visitors.
- From the Museum galleries to the public toilet, there is level access.
- The toilet door is 900mm wide.
- There is a space of 1160mm in front of the toilet.
- The seat is 480mm high.
- The direction of transfer to the toilet is from the front only.
- There are handrails in the toilet.
- The [nearest Changing Places toilet](#) is located 0.6 miles away in the Barbican Centre.

The guided tour route

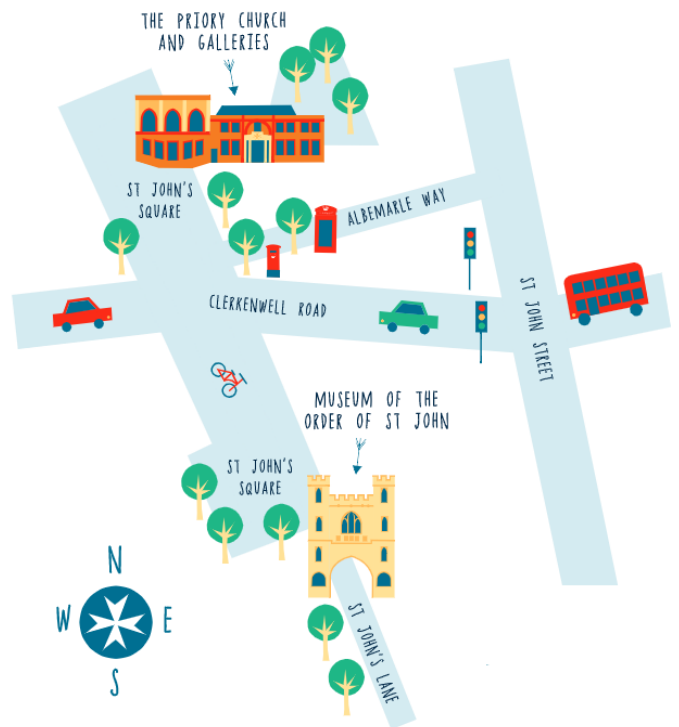
Stop 1: The south side of St John's Gate



The south side of St John's Gate

- From the Museum reception to the south side of the Gate, there is level access. The ground is paved in a mixture of flagstones and cobbles.

Stop 2: St John's Square



St John's Square

- The distance between St John's Gate and St John's Square is 100m, the majority of which is paved in flagstones.
- The route is dissected by Clerkenwell Road and Albemarle Way.
- Clerkenwell Road has a pedestrian crossing with dropped kerbs and a refuge island.
- There is a dropped kerb for the crossing over Albemarle Way



Clerkenwell Road has a pedestrian crossing with dropped kerbs and a refuge island.



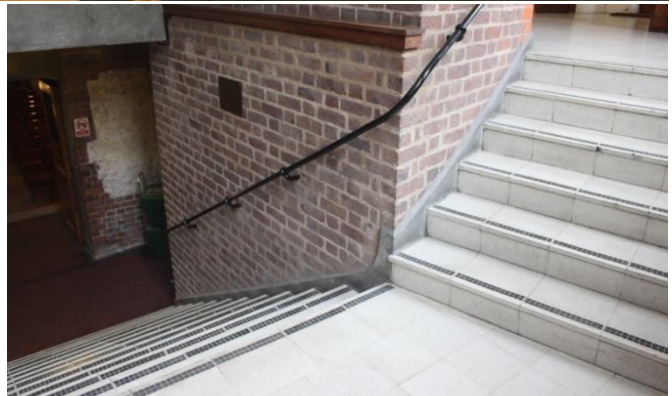
There is a dropped kerb for the crossing over Albemarle Way.

Stop 3: The Crypt



The Crypt

- From St John's Square there are three ascending steps up into the church foyer. There are no handrails.
- From the Church foyer down into the Crypt, there are 23 descending steps. The steps are split over 3 flights of 6, 12 and 5 steps respectively, with a landing in between each flight. A permanent handrail is available on the right hand side of the first flight and both sides of the second and third flights, as you descend.
- There are seats in the Crypt.



From the Church down into the Crypt there are 23 steps.

Stop 4: The Priory Church



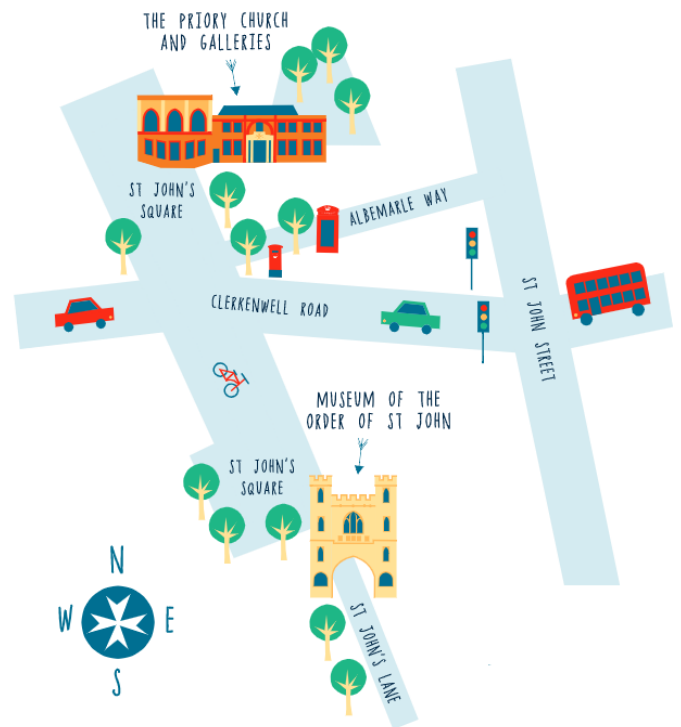
The interior of the Priory Church.

- From the Crypt to the Church foyer you return up the same 23 steps, split over 3 flights of 5, 12 and 6 steps.
- From the Church foyer into the Church, there are 3 steps. A permanent handrail is available on the right as you ascend.
- There are seats in the Church.



From the Church foyer into the Church, there are 3 steps. A permanent handrail is available on the right as you ascend.

Stop 5: Underneath the Gate



St John's Square

- The distance between St John's Gate and St John's Square is 100m, the majority of which is paved in flagstones.
- The route is dissected by Clerkenwell Road and Albemarle Way.
- Clerkenwell Road has a pedestrian crossing with dropped kerbs and a refuge island.
- There is no dropped kerb for the crossing over Albemarle Way.



Clerkenwell Road has a pedestrian crossing with dropped kerbs and a refuge island.



There is no dropped kerb for the crossing over Albemarle Way.

Stop 6: West Tower and Council Chamber

The West Tower

- To get to the Council Chamber your Guide shall take you up the West Tower Staircase, where the stairs date from 1504.
- There are thirty-seven spiral steps that lead up to our Council Chamber. The steps are uneven, and visitors are advised to take precautions when climbing the stairs. There is a handrail, however this is broken into four sections, where at times it can be up to a metre with no handrail.
- An alternative route to the Council Chamber is possible if accompanied by a member of staff. This route goes through the neighbouring St John Ambulance offices, where there are two lifts which allow access to the first floor of that building. There are raised numbers and braille numbers on the buttons in the lifts. The lifts announce the floor number. Please speak to a member of staff before the tour if you require use of a lift.



Council Chamber



From the Old Chancery to the Council Chamber there is level access.

- There are seats in the Council Chamber.
- The historic rooms upstairs at St John's Gate (the Chapter Hall, Old Chancery and Council Chamber) can also be explored via Google Street View at https://www.google.com/maps/@51.5220116,-0.1027311,3a,75y,284.82h,83.33t/data=!3m7!1e1!3m5!1sAF1QipN4Rdlftl8l_vlzYpEd_JPWJDzDqIPqbm4hDiBbI2e10!3e2!7i13312!8i6656 Please note that some details may have changed since these images were taken.



There are seats in the Council Chamber

Stop 7: Chapter Hall



The Chapter Hall

- From the Council Chamber to the Chapter Hall there are 4 steps. A permanent handrail is available on the left as you descend.
- There are seats in the Chapter Hall.
- The historic rooms upstairs at St John's Gate (the Chapter Hall, Old Chancery and Council Chamber) can also be explored via Google Street View at <https://bit.ly/3vGqQ3m>. Please note that some details may have changed since these images were taken.

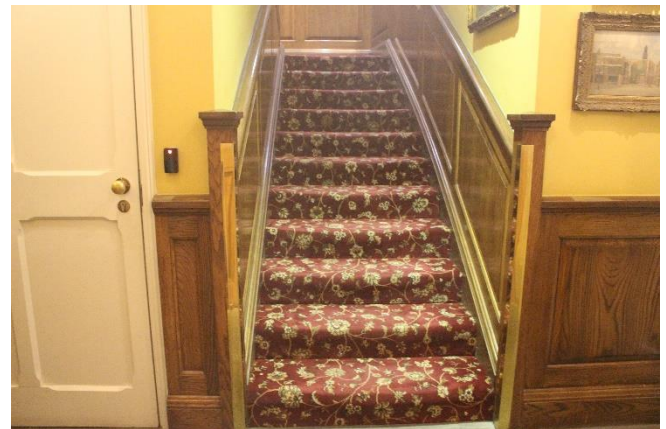


There are seats in the Chapter Hall.

Finishing point: Link Gallery



- From the Chapter Hall to the Link Gallery, there are 40 carpeted steps. A permanent handrail is available on both sides of the staircase. The steps are split over 4 flights of 11, 10, 12 and 7 steps respectively, with a landing in between each flight.
- An alternative route to the bottom end of the Link Corridor is possible if accompanied by a member of staff. This route goes through the neighbouring St John Ambulance offices, where there are two lifts which allow access to the first floor of that building. There are raised numbers and braille numbers on the buttons in the lifts. The lifts announce the floor number. Please speak to a member of staff before the tour if you require use of a lift.
- At the end of this tour you will find yourself next to the Museum Reception, which you can exit out of or peruse these galleries further after the tour.



From the Chapter Hall to the Link Gallery, there are 40 carpeted steps.